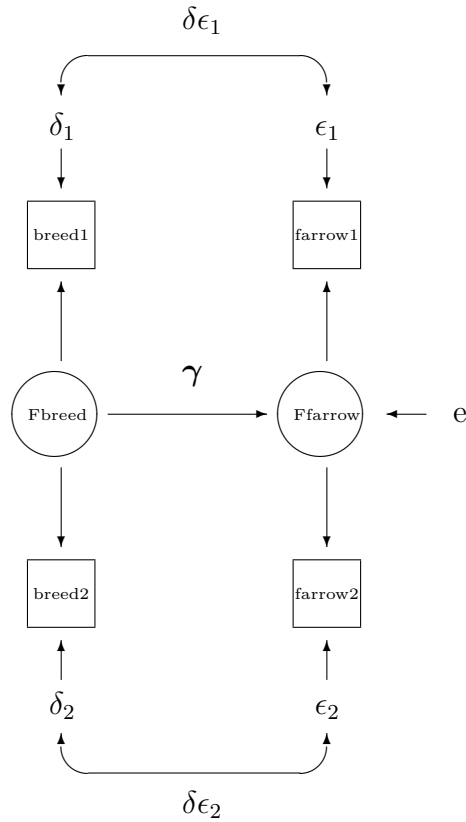


## STA 312F2007 Solutions to Quiz 10

1. The path diagram



2. This model is identified because when data are collected according to the double measurement design, model identification is guaranteed.

3. Test statistic,  $X^2 = 4.4834$   
degrees of freedom = 1  
p-value = 0.0342

Reject  $H_0$  since p-value  $< 0.05$ , we conclude that the model is not appropriate.