

# A Brief Introduction to R

```
> 1+1
[1] 2
> 2^3 # Two to the power 3
[1] 8

> 1:30
[1] 1 2 3 4 5 6 7 8 9 10 11 12 13 14 15 16 17 18 19 20 21 22 23 24 25
[26] 26 27 28 29 30

> gamma(.5)^2      # Gamma(1/2) = Sqrt(Pi)
[1] 3.141593

> x = 1             # Assigns the value 1 to x
> y = 2             # Assigns the value 2 to y
> x+y
[1] 3
> z = x+y
> z
[1] 3
> x = c(1,2,3,4,5,6) # Collect these numbers; x is now a vector

> z # No dynamic updating; it's not a spreadsheet
[1] 3
> x+y
[1] 3 4 5 6 7 8

> y = 1 + 2*x
> cbind(x,y)
      x y
[1,] 1 3
[2,] 2 5
[3,] 3 7
[4,] 4 9
[5,] 5 11
[6,] 6 13

> z = y[x>4]      # z gets y such that x > 4
> z
[1] 11 13
> z2 = subset(y,x>4); z2
[1] 11 13

> # If you put an array of integers inside the brackets, you get those
> # elements, in the order indicated.

> y[c(6,5,4,3,2,1)] # y in opposite order
[1] 13 11 9 7 5 3
> y[c(2,2,2,3,4)] # Repeats are okay
[1] 5 5 5 7 9
> y[7] # There is no seventh element. NA is the missing value code
[1] NA
```

---

```

> # Computing probabilities, etc.
>
> pnorm(0) # Area less than zero for a standard normal
[1] 0.5
>
> pnorm(160,mean=100,sd=15) # IQ of 160
[1] 0.9999683
>
> pcauchy(4)
[1] 0.9220209
>
> dnorm(0) # height of the curve
[1] 0.3989423
>
> dpois(0,lambda=3) # P(Y=0) for Y ~ Poisson(3)
[1] 0.04978707
>
> qnorm(0.975) # z value with P(Z<z) = 0.975
[1] 1.959964
>
> qf(0.975,df1=6,df2=122) # Critical value for F, not in any table
[1] 2.513606
>
> CriticalValue = qchisq(0.95,df=1:8)
> df=1:8; cbind(df,CriticalValue)
      df CriticalValue
[1,]  1      3.841459
[2,]  2      5.991465
[3,]  3      7.814728
[4,]  4      9.487729
[5,]  5     11.070498
[6,]  6     12.591587
[7,]  7     14.067140
[8,]  8     15.507313

```

```

> # data() lists available data sets
> trees
  Girth Height Volume
1   8.3    70  10.3
2   8.6    65  10.3
3   8.8    63  10.2
4  10.5    72  16.4
5  10.7    81  18.8
6  10.8    83  19.7
7  11.0    66  15.6
8  11.0    75  18.2
9  11.1    80  22.6
10 11.2    75  19.9
11 11.3    79  24.2
12 11.4    76  21.0
13 11.4    76  21.4
14 11.7    69  21.3
15 12.0    75  19.1
16 12.9    74  22.2
17 12.9    85  33.8
18 13.3    86  27.4
19 13.7    71  25.7
20 13.8    64  24.9
21 14.0    78  34.5
22 14.2    80  31.7
23 14.5    74  36.3
24 16.0    72  38.3
25 16.3    77  42.6
26 17.3    81  55.4
27 17.5    82  55.7
28 17.9    80  58.3
29 18.0    80  51.5
30 18.0    80  51.0
31 20.6    87  77.0
> mean(trees$Height); var(trees$Height)
[1] 76
[1] 40.6
> mean(Height)
Error in mean(Height) : object 'Height' not found
> attach(trees)
> mean(Height)
[1] 76

```

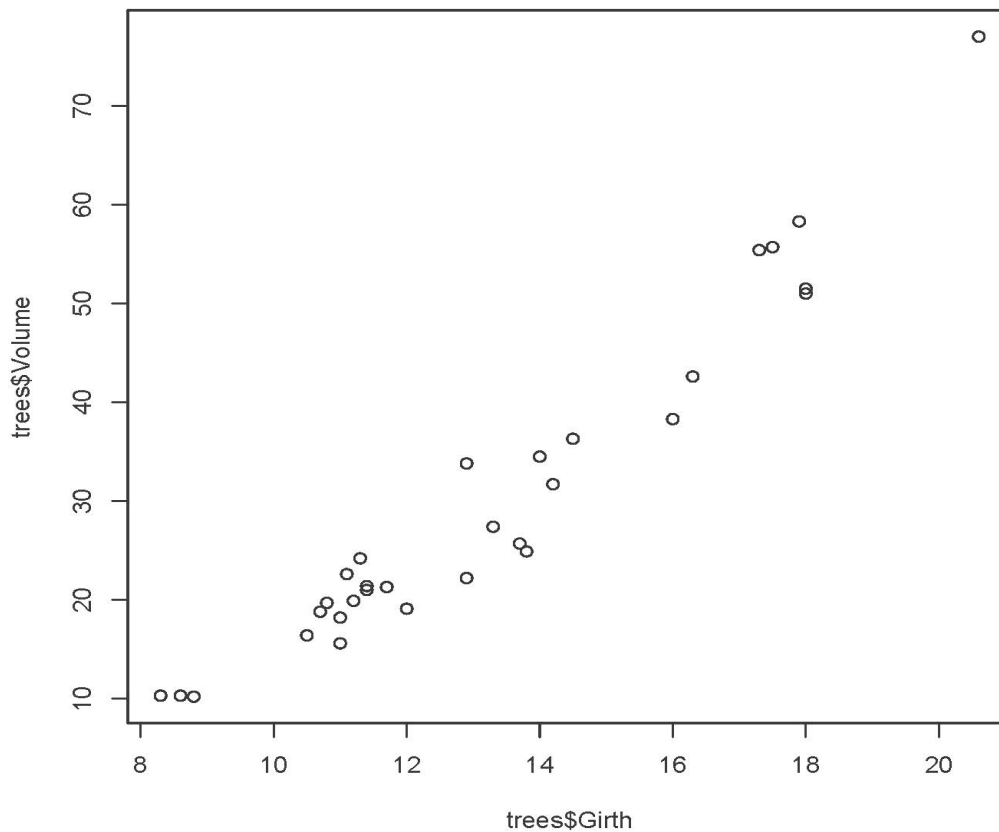
```
> summary(trees)
```

Girth	Height	Volume
Min. : 8.30	Min. :63	Min. :10.20
1st Qu.:11.05	1st Qu.:72	1st Qu.:19.40
Median :12.90	Median :76	Median :24.20
Mean :13.25	Mean :76	Mean :30.17
3rd Qu.:15.25	3rd Qu.:80	3rd Qu.:37.30
Max. :20.60	Max. :87	Max. :77.00

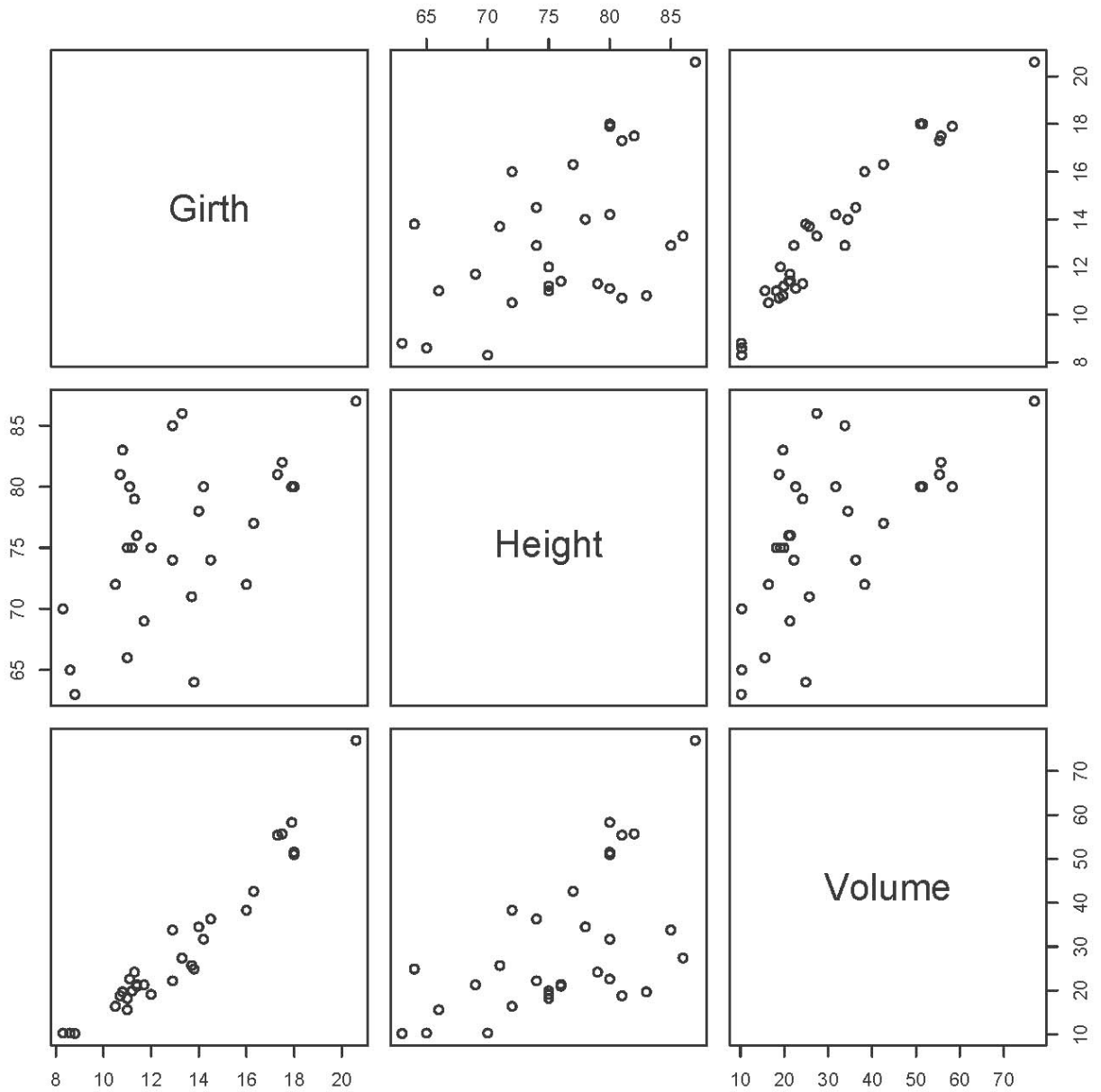
```
> cor(trees)
```

	Girth	Height	Volume
Girth	1.0000000	0.5192801	0.9671194
Height	0.5192801	1.0000000	0.5982497
Volume	0.9671194	0.5982497	1.0000000

```
> plot(trees$Girth,trees$Volume)
```



```
> pairs(trees) # Can also give it a matrix, in which the columns are variables
```



# Going further on your own

Look at the free mini-book *An introduction to R* by Venables et al. A copy is available at <http://www.utstat.toronto.edu/~brunner/help/R-intro.pdf>. Or, try

```
> library(help="stats")
```

AIC	Akaike's An Information Criterion
ARMAacf	Compute Theoretical ACF for an ARMA Process
ARMAtoMA	Convert ARMA Process to Infinite MA Process
Beta	The Beta Distribution
Binomial	The Binomial Distribution
Box.test	Box-Pierce and Ljung-Box Tests
C	Sets Contrasts for a Factor
Cauchy	The Cauchy Distribution
Chisquare	The (non-central) Chi-Squared Distribution
Exponential	The Exponential Distribution
FDist	The F Distribution
GammaDist	The Gamma Distribution
Geometric	The Geometric Distribution
HoltWinters	Holt-Winters Filtering

. . . list continues!

To see details on one of these packages, type something like

```
> help(t.test)
```

Generally, R's help assumes knowledge of the topic, but they often give references. For a quicker introduction to many statistical topics, try the Wikipedia:

<http://en.wikipedia.org>

Or you could ask me, but I might have to look in the Wikipedia.

---

This document was prepared by [Jerry Brunner](#), University of Toronto. It is licensed under a Creative Commons Attribution - ShareAlike 3.0 Unported License: [http://creativecommons.org/licenses/by-sa/3.0/deed.en\\_US](http://creativecommons.org/licenses/by-sa/3.0/deed.en_US). Use any part of it as you like and share the result freely.