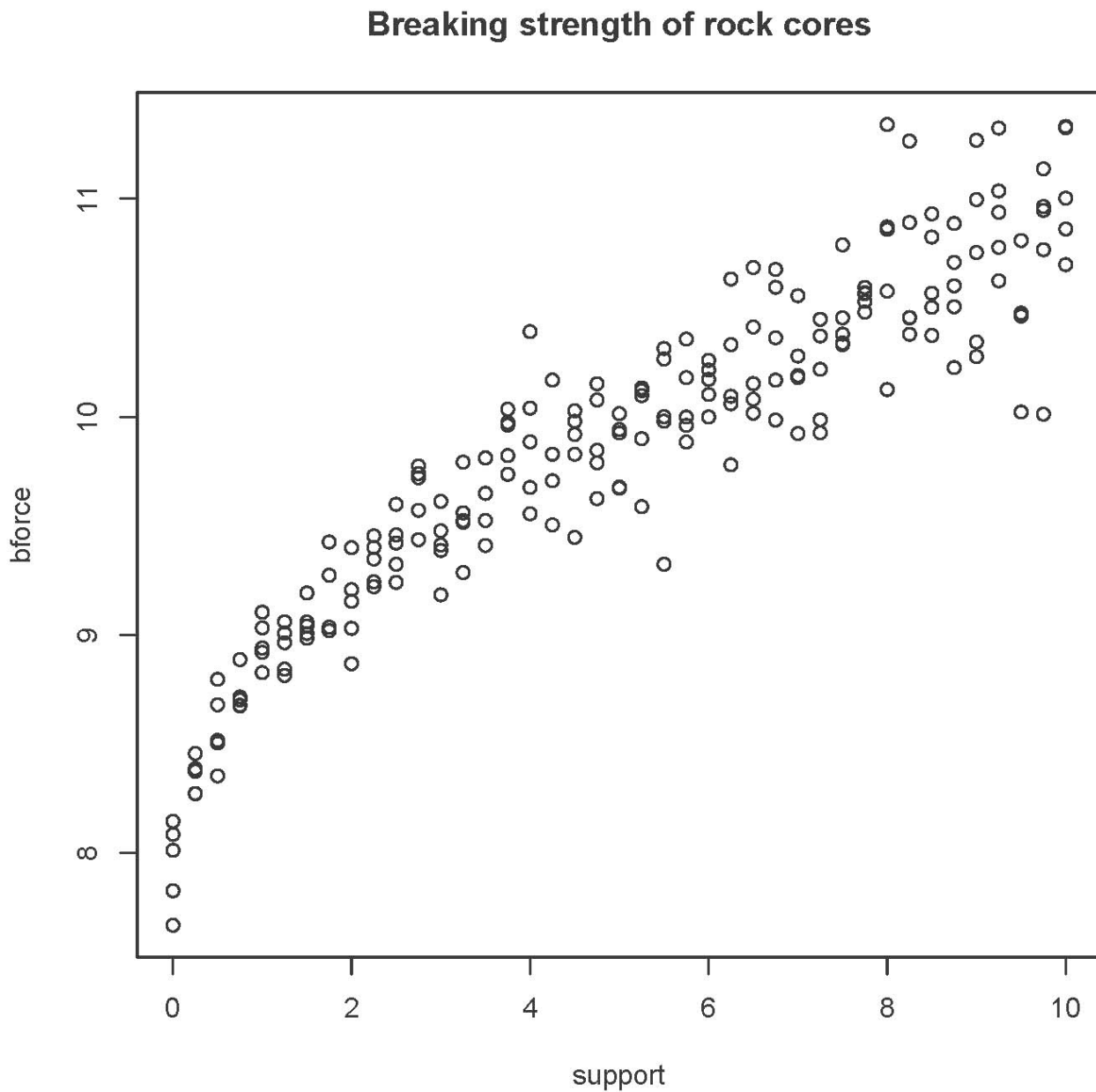


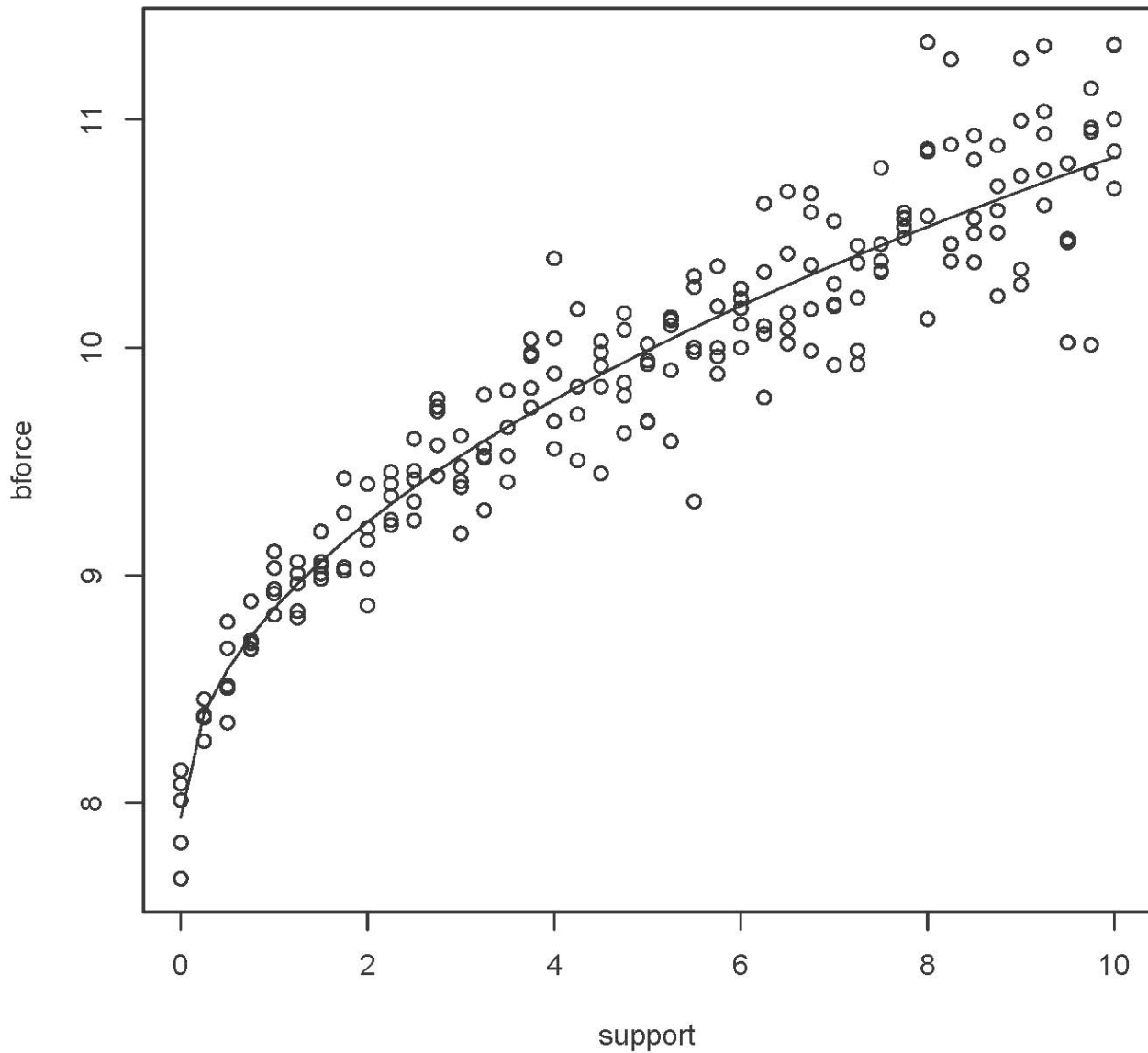
# Breaking Rocks

```
> rock =  
read.table("http://www.utstat.toronto.edu/~brunner/302f14/code_n_data/lectu  
re/rock1.data")  
> attach(rock)  
> plot(support,bforce)  
> title("Breaking strength of rock cores")
```



```
> # Plot least squares curve
> sqrtsup = sqrt(support)
> sqrtmodel = lm(bforce~sqrtsup)
> lines(support,sqrtmodel$fitted.values,type='l')
```

### Breaking strength of rock cores



This document is licensed under a Creative Commons Attribution - ShareAlike 3.0 Unported License: [http://creativecommons.org/licenses/by-sa/3.0/deed.en\\_US](http://creativecommons.org/licenses/by-sa/3.0/deed.en_US). Use any part of it as you like and share the result freely.